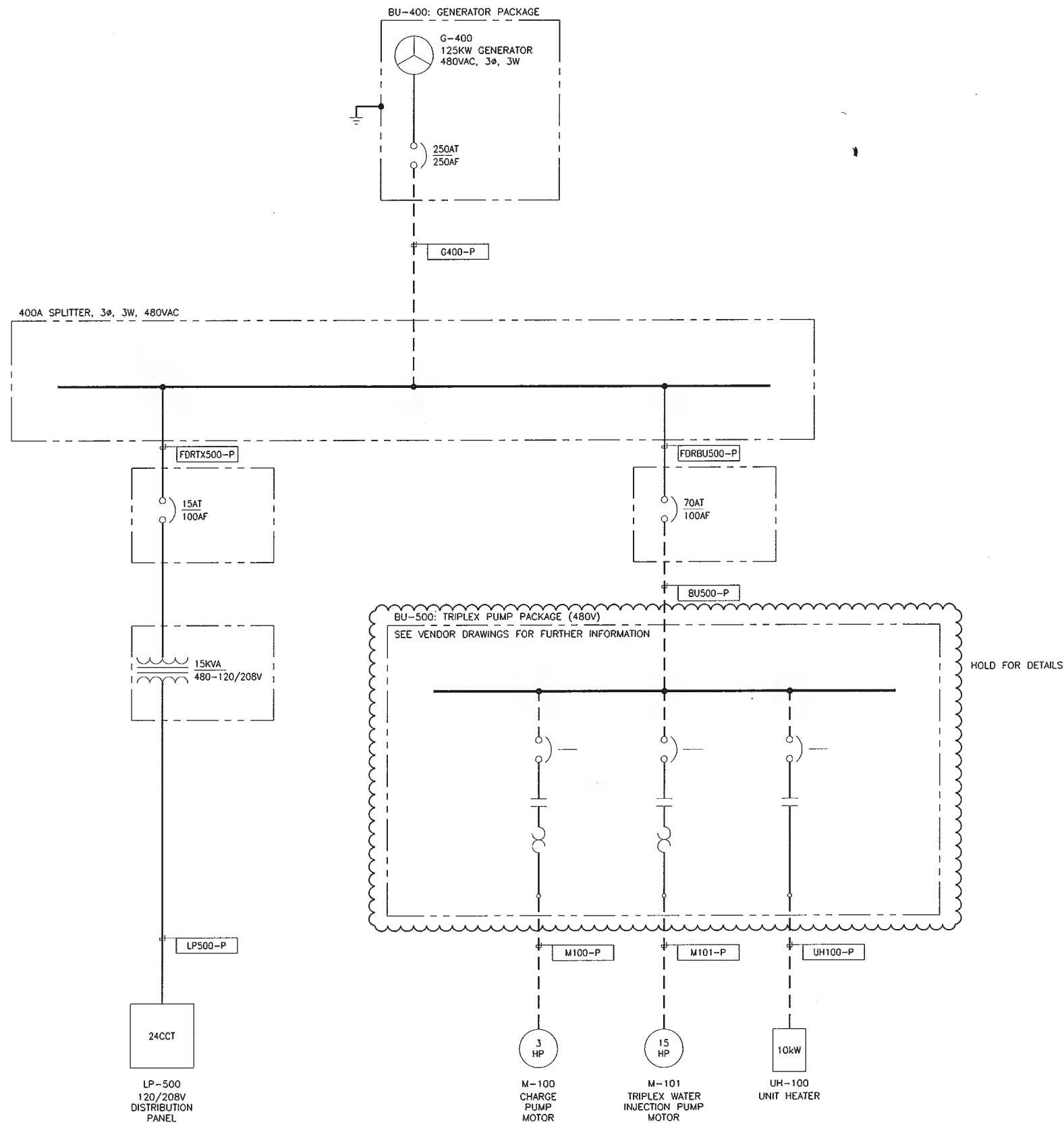


THE INFORMATION AND DATA CONTAINED IN THIS DRAWING IS CONFIDENTIAL AND PROPRIETARY IN NATURE AND SUBJECT TO COPYRIGHT, AND MAY NOT BE REPRODUCED, COPIED, IMITATED, REPRODUCED, ALTERED, CHANGED, MODIFIED, SOLD, DISTRIBUTED OR UTILIZED IN ANY FORM WITHOUT PERMISSION OF THE OWNER



PEL PN4112	NUMBER	REFERENCE DRAWINGS	NO	REVISION DESCRIPTION	PN	BY	DATE	CHD	APP	ENGINEERS & PERMIT STAMPS		<div>PERPETUAL ENGINEERING</div> <div>MANNVILLE HEAVY OIL WELLS LSD: 09-20-045-07 W4M 480VAC SINGLE LINE DIAGRAM</div>		
			A	ISSUED FOR APPROVAL		DMC	2011.11.30	PTC	HTH			SCALE	DRAWING NUMBER	REV
										<div>PERMIT TO PRACTICE CATCH ENGINEERING CORPORATION PERMIT NUMBER: P09565 <small>The Association of Professional Engineers, Geologists and Geophysicists of Alberta</small></div> <div>PERMIT STAMP AND PROFESSIONAL STAMP AFFIXED SHALL APPLY ONLY TO REV(S) 0</div>		N.T.S.	PRP0004-EE-SLD-001	A

FILE: X:\Projects\PRP (Perpetual Energy Inc)\PRP0004 - Perpetual 09-20 Water Injection Well Tie-in\Drilling\Temp\PRP0004-EE-SLD-001-RD.dwg PLOTTED: 2011-12-07, 12:57